



INFORMATION PACK

NEW ZEALAND STUDENTS

- Information for New Zealand Students (pages 2-3)
- Air Hawke's Bay Profile and Benefits
- Facilities
- Course Outcomes
- Enrolment Procedure for New Zealand Students
- Medical Requirements for Pilot Licences
- Flow chart
- Savings
- PPL/CPL/IR Syllabi
- Past Students





INFORMATION FOR NEW ZEALAND STUDENTS

AIR HAWKE'S BAY LTD

Air Hawkes Bay Limited (AHB) is the wholly-owned Company of the Hawkes Bay & East Coast Aero Club Inc. AHB specialise in providing full-time integrated pilot training for both domestic and international students and air charter services.

AHB was the first NZ training provider to be accredited with CAA Part 141. Our training courses have New Zealand Qualification Authority approval and our organisation is a Signatory to the Code of Practice for International Students.

Our graduates have a high success rate of obtaining aviation employment which is achieved through a specialised internship program, having proficient instructor to staff ratios and quality systems. Our unrivalled airspace supported with good weather conditions also provide our students with better training coherency.

LEADING FEATURES

Establishment and Facilities

- In the aviation education market for more than 80 years
- **Owner and Operator of its own aerodrome – unlimited airspace**
- Students become part of an enthusiastic aviation community culture
- Longer history of training Commercial Pilots.
- Onsite and offsite accommodation
- Varied weather patterns and landscape.
- Four instrument approaches in to our Aerodrome and up to 8 different instrument approaches within 5 minutes flight time of Hastings aerodrome. All are available for Instrument training.

Service Capabilities and Programmes

- Train students to be team players
- Flexible to adapt with course duration that suits customer needs
- EIT graduate product is unique to other providers with added value outcomes
- An outstanding success record with graduates operating around the World
- High student pass rates
- Delivers integrated CPL with MEIR course
- **Annual capacity of 35-40 CPL/MEIR students**
- Instrument Ratings Garmin 1000
- ATPL, GPS, and BGT courses (Optional)
- Full compliment of Instructors with advanced ratings and privileges.
- Uncontrolled airspace – nearby controlled airspace 2NM north of the airfield
- No landing fees and ATC charges for local flights
- Time and money saved by not having to get ATC clearances.
- **Conventional and Glass cockpit aircraft/simulator**
- ILS,NDB,GPS and VOR approaches within near vicinity.



We have a fleet of 17 aircraft including the latest 1000 Garmin (Glass Cockpit) aircraft and state of the art Simulators and all the aircrafts are maintained to a high safety standard. We have 15 Instructors including Chief Flying Instructors who are well experienced with over 15,000 flight hours. We believe in personalized training and keep our classes small maintaining instructor to student ratio of under 1:3 for flight instructions and no more than 15-20 students per lecture for ground training.

In the meantime, read on, and we hope that you find our Information Pack comprehensive and useful.

AERODROME

The Hawke's Bay & East Coast Aero Club's aerodrome is called the Hastings Aerodrome, and it is adjacent to the small village of Bridge Pa. It is situated on the Heretaunga Plains 2kms south of the western suburbs of Hastings and 4kms from the Hastings City centre.

There are two eighteen hole golf courses adjacent to the Aerodrome. A Gliding Club, Skydiving Club, Helicopter Operators, Aircraft Avionics and Engineers and Aerial Agricultural Operators are based on the aerodrome. There is also a NZ Aerial Mapping Company. There are a number of privately owned aircraft at Hastings along with a group of Amateur Aircraft Builders.

The main runway is 3500ft long, sealed and has night lighting installed. The parallel grass runway is 3000ft long. The grass/seal cross runway is about 2000ft long. Fuel and oil are available. There are four Instrument Approaches into Hastings and up to eight different Instrument Approaches within five minutes from take-off at Hastings. All Approaches are available for Instrument training.

The Aerodrome is dedicated to the training of fixed and rotor wing pilots, glider pilots, and parachutists, supported with Air Transport Operations and Air Ambulance movements.



AIR HAWKE'S BAY LTD BENEFITS



- Small **Friendly** Classes with **new** Facilities
- Consistently **fine sunny days** which are great for flying
- **Dedicated Training Airfield** [Sealed, Lit, & Grass Runways; 4 Instrument Appchs]
- Free Airspace - **Free Landing Charges at Hastings**
- On **Aerodrome Accommodation** Flats
- Nearby **Controlled Airspace** for advanced training
- **Experienced, Friendly, Operationally Current**, Multi-engine IFR Instructors
- **NZ Wide flying** in North & South Island, 5 International Airports, Strip & Mountain Flying
- Pt 141 **CAA Approved Aviation Training Organisation** with aircraft maintained at
- Pt 145 Maintenance Organisation
- **Lower Provincial costs** providing large **savings** on training cost and personal expenditure
- Government **Registered Aviation College** for Overseas Students



PILOT TRAINING FACILITIES

COURSES

NZ Diploma in Aviation	Full-time two year course (Student loan)
Private Pilot Licence	Full-time PPL including Theory & Flying
Aircraft Type Ratings	PA38, PA28, C172, PA18, RC114 Multi-engine Ratings - PA-34
Night Ratings	Either PPL or CPL
Commercial Pilot Licence	Full-time including Theory & Flying Flying Only (Holders of CPL Theory Credits)
Instrument Ratings	Full-time I/R including Theory & Flying Flying Only (Holders of I/R Theory Credits)
Nav-aid Ratings	ADF, VOR, DME, ILS, GPS, Garmin G1000
Instructor Ratings	Initial Issue and Upgrades
Airline Courses	Basic Gas Turbine Ratings

*Please contact us for information regarding casual or block training.

AIRCRAFT

Single-engine Aircraft	7 Piper Tomahawks equipped night VFR 1 Piper Archer equipped Single Pilot IFR 1 Cessna 172 equipped Single Pilot IFR 1 Cessna 172 equipped Single Pilot IFR (glass cockpit) 1 Rockwell Commander 1 Piper Cub
Multi-engine Aircraft	2 Piper Senecas equipped Single Pilot IFR
Simulators	Frasca Mentor equipped for full I/R (Garmin G1000) AT-21 equipped for full I/R inc. ADF VOR DME ILS GPS





STAFF

Instructors

"A" Category Instructor and Flight Examiner

5 x "B" and 7 x "C" Category Instructors

All Instructors are Single Pilot IFR

Office Receptionists

Twenty years experienced aviation knowledge

AERODROME

Hastings Aerodrome is owned and operated by the Hawke's Bay & East Coast Aero Club. There is a sealed lighted group 8 runway, a parallel grass runway, and a grass/seal cross runway. There are four published Instrument Departures and Approaches. A VHF Repeater is installed at Hastings for continuous communications with Air Traffic Services. An AWIB is installed to provide automated weather briefings.

ACCOMMODATION

Aerodrome Flats

4 x 2-bedroomed cottages including fully self-contained kitchens and bathrooms.

All bedrooms contain a bed, wardrobe, chest of drawers, study desk and lamp.

There is a laundry available for all tenants which provides a washing machine, dryer, and ironing equipment. Outside clotheslines are also available.

Accommodation is to be applied for by completing the relevant section of the Application Form (overseas student have priority).

The cost of accommodation is \$NZ130.00 per week.

(Please note that this may increase as we in the process of constructing brand-new accommodation units. The Price List shows accommodation at \$130.00 per week.)

A Tenancy Agreement is required to be completed on arrival, regarding standard rules of behaviour to be observed.

Other Options

There are a number of options available, from camping grounds to luxury bed and breakfasts.

Camping grounds range from \$20 per night for a campervan site, up to \$105 for a serviced unit.

Backpacker Inns range from \$90 to \$210 per week

Motels range from \$75 per night to \$200 per night

Bed and Breakfasts and Homestays are the most expensive option, costing from \$80 per night up to \$200-\$300 per night.

For further information, please visit website www.hawkesbay.com and click on "Places to Stay".

Course Outcomes

A Professional Pilot Training Course gives the enrolled student the opportunity of obtaining the mandatory qualifications that are pre-requisites for a career as a pilot. That is, the Commercial Pilot Licence (CPL) which you need for employment as an Airline Pilot, Topdressing Pilot, Commuter Pilot, Flying Instructor, Corporate Pilot, or Air Charter/Scenic Pilot. In addition, the Airline, Commuter, Corporate, & Air Taxi Pilot, and most Flying Instructors need an Instrument Rating (I/R) for bad weather flying. This is why we offer an Integrated CPL and I/R Course.



The Topdressing Pilot only needs to complete the CPL module. Also it is desirable to have some exposure to Topdressing as a Loader Driver prior to completing an Agricultural Rating for the role of Ag Pilot. The Agriculture Rating is normally done at the place of employment.

The trainee pilot looking ahead to a job as an Airline, Commuter, or Corporate Pilot needs to be aware of a further pre-requisite to employment. That is, having over 1000 hours in his/her logbook and 100-200 hours multi-engine experience. Normally this experience is gained partly during your Professional Licence and Rating training (thus the more flying involved in the Course, the better), and, in General Aviation as an Instructor, Scenic Pilot, Air Charter Pilot, or as a Co-pilot. There are two CPL courses available in NZ, the 150hr CPL Course and the 200hr CPL Course. We recommend the 200hr Course as a higher quality learning environment. The 200hr Course has the added advantage over the 150hr courses of significantly more hours in your logbook towards the normal airline pilot experience pre-requisites. As the flight test is basically the same for the 150hr and 200hr Course, the 200hr CPL Course gives the added benefit of more flying time to practice and ensure you pass the CPL Flight Test. We have extended our Professional Pilot Training Course which includes PPL/CPL/SEIR, to **238hrs** to assist you to obtain logbook hours and the maximum experience and opportunity to pass your flight tests. However we can tailor the course to suit the student requirements.

Students are also interested in the cost of their Training Courses with the ideal course being of a high quality, that provides the maximum number of hours in your logbook for the lowest cost. Some full-time Pilot Training Courses around NZ have total Course Costs around \$345.00 per hour in the students logbook. Our current Course cost is only \$250.00 per logbook hour, and we believe that our **238hr** Fully Integrated Professional PPL/CPL/IR Course and other courses is the best value Course for money in the country and even better, our graduates are getting the jobs.

A further point that is of value to pilot trainees concerns the Airline Transport Theory subjects. There is no need to do these theory subjects when you are doing your PPL/CPL/IR Course. After you qualify as a CPL/IR there is plenty of time available when you are clocking up your first 1000hrs in your first pilot job, to study and pass ATPL subjects. There is also time to complete a turbine rating when building up your experience. However if you wish add these Courses to your training, they are available at Air Hawke's Bay Ltd. From time to time there may be a hiring lull in Pilot Recruitment. Don't be discouraged by this lull as it has historically been followed by strong growth and jobs for those pilots that trained during the lull in recruitment. Training after the lull is over has sometimes proved a little late to catch the job growth.

In summary, the **benefits** available at Air Hawke's Bay Ltd are:

- ➔ On Aerodrome Accommodation low cost
 - ➔ More hours in your log book at a lower cost than other courses
 - ➔ A quality, friendly and personalized course
 - ➔ Excellent weather for training and new facilities
- Government approved courses



ENGLISH LANGUAGE REQUIREMENTS

English is the required legal language to be used in aviation world-wide. We don't have formal requirements for New Zealand students but would expect approximately NCEA Level One/School Certificate level.

The New Zealand Civil Aviation Authority (CAA) now requires all potential pilots to complete an English Language Proficiency Exam as part of their licence issue. We can conduct this test for you, on our premises, and the cost is included in your tuition fees. Please check the Aviation Language Proficiency requirements at www.caa.govt.nz for details by clicking on the link for "Pilots".

TRAFFIC OFFENCES AND CRIMINAL CONVICTIONS

Applicants for a New Zealand pilots licence are required to provide a record of traffic offences and criminal convictions from any country that they have lived in during the last five years. Even if you have a clear record, proof of this is still required. Please contact the Police Department in the relevant countries you have lived in to obtain these records.

FEE PAYMENTS AND REFUNDS

As part of our compliance, we are required to ensure adequate protection of student fees paid in advance.

Payments:

In accordance with the New Zealand Qualification Authority regulations, Air Hawke's Bay Ltd has chosen to protect student fees by using the Public Trust Student Fee Trust Account. The total of your Course fees (including accommodation costs) should be paid directly to the Public Trust Bank Account.

Upon receipt of your Application Form, we will forward to you our Student Handbook, which will detail how to make payment for your Course. You will be asked to sign a Student Application, on arrival at Air Hawke's Bay Ltd, to establish your Student Fee Trust Account, as part of your initial orientation.

Your funds are then "drip-fed" to us, on a fortnightly basis.

Please note that prices are subject to change without notice up to \pm 4%.

Refunds:

A full pro-rata refund, less a \$200.00 Administration Fee or up to 10% of uncompleted course fees (whichever is the higher) and purchases to date, is available at any time during the Course. Any funds deposited with our organisation that are not utilised within 12 months will be forfeited.



ENROLMENT PROCEDURE

1. Meet the following pre-requisites:
 - Be at least 18 years of age
 - Hold reports for traffic offences and criminal convictions (see pg 3)
 - Hold a Pilot Medical Examination – Class 1 for CPLs and Class 2 for PPLs (see pg 10-11)

2. Complete the Application Form and return it to us, either by:

Post: P O Box 2199
Hastings 4153
NEW ZEALAND

Email: info@airhb.co.nz

Fax: 0064 6-879-9805

Please remember to record whether you need aerodrome accommodation (where indicated) on the Application Form. For any queries regarding accommodation, please contact Justine Fisher (Administration Manager), via the above contact details.

Once we have received your completed Application Form, and agreed on a course start date, we will forward to you our Student Handbook, which includes a Bank Deposit Slip for the Public Trust, together with a letter detailing the amount you need to pay.

3. Pay the full course funds (including accommodation) to the NZ Public Trust.

Once payment has been made and all course pre-requisites have been met, we will issue you with a Formal Letter of Acceptance, as well as a copy of your Application Form signed by ourselves.

4. Advise us of your arrival details.



MEDICAL REQUIREMENTS FOR PILOT LICENCES

A student pilot trainee is required to hold a current Medical Certificate to fly solo. There are two types of Medical Certificates. A Class Two Medical Certificate for student and private pilot licences and a Class One Medical Certificate for Professional Pilot Licences, ie Commercial and Airline Pilot Licences.

The requirements for non-professional and professional pilot licences are similar but the requirements are more strict in the case of the professional pilot in order to guarantee a greater degree of protection to the public who make use of his or her services.

A Pilot trainee needs to obtain and hold a Pilot Medical Certificate before reaching Solo Pilot standard. Solo standard can be achieved quickly in only 8 - 15hrs of training.

The requirements are listed in detail in Civil Aviation Rule Part 67, and the associated Advisory Circular. In general, an applicant for a pilot licence shall be free from such active or latent, acute or chronic, physical or mental disability, illness or disease as would entail a degree of functional incapacity likely to interfere with the safe operation of an aircraft. Medical examinations may include:

- a) A general physical and mental examination
- b) Eyes, ear nose and throat examination
- c) Chest x-ray
- d) Visual and colour perception tests
- e) A hearing test.
- f) An electro cardiogram.

Persons not meeting the visual requirements may, in certain circumstances, qualify for the issue of a Pilot Medical Certificate providing correcting lenses are worn while flying.

Persons having a colour perception problem may be issued with a Pilot Medical Certificate having strict limitations including "not valid for night flight" and "not valid for air transport operations". Such restrictions limit a professional pilot licence holder to essentially agricultural operations.

Very Important: A person contemplating a career in aviation should be medically examined to professional (Commercial Pilot Licence) standard before any significant amount of money or time is spent on flying lessons. Such an examination will not only give you the information required but also qualify you for the issue of a non professional medical certificate.

Medical fitness is assessed by an approved Medical Examiner (ME). A list of local Hawke's Bay MEs are on the next page. Please visit www.caa.govt.nz for the complete list of approved Doctors in New Zealand.

If you have a medical condition (either recurrent or long term) which you feel may affect a licence, discuss it with an approved ME. In these circumstances a specialist medical report may be suggested to assist the ME.



Obviously any medical condition or the drugs controlling that medical condition which may affect your concentration, judgement or physical skills are relevant when assessing your fitness to hold a pilot licence. The use of certain drugs are not permitted to holders of pilot licences due to side-effects. A person having a history of alcohol or drug addiction may be refused the issue of a pilot licence.

PPLs who wish to gain an Instrument Rating without a CPL are required to meet the CPL hearing requirements in addition to the PPL medical requirements.

The steps involved in getting a Pilot Medical Certificate are:-

- 1) Contact one of the Civil Aviation Approved Doctors (listed below) and ask for an appointment for a medical examination for:
"An Initial Issue of a Class 2 (or 1) Medical Certificate"
NB: If training for a Commercial Pilot Licence other Specialist appointments are required as detailed in Civil Aviation Rule Part 67 and associated Advisory Circular.
- 2) Have the Medical Examination. A Grade 2 Medical Examiner will need to forward your report to a Grade 1 ME for assessment. A Grade 1 ME can complete the assessment himself.
- 3) Receive your Medical Certificate from a Grade 1 Medical Examiner.
- 4) Hand your Medical Certificate to your Flying Instructor of the office staff so that a copy can be made for our records.

Hawke's Bay Doctors approved for Pilot Medical Examinations are:

Medical Examiner – Grade 1

Dr Dave Baldwin
61 Airport Drive
P O Box 4694
PALMERSTON NORTH
Ph 06 355-2879
dave@flyingdoctor.co.nz (a mobile aviation doctor)

Eye Specialists:

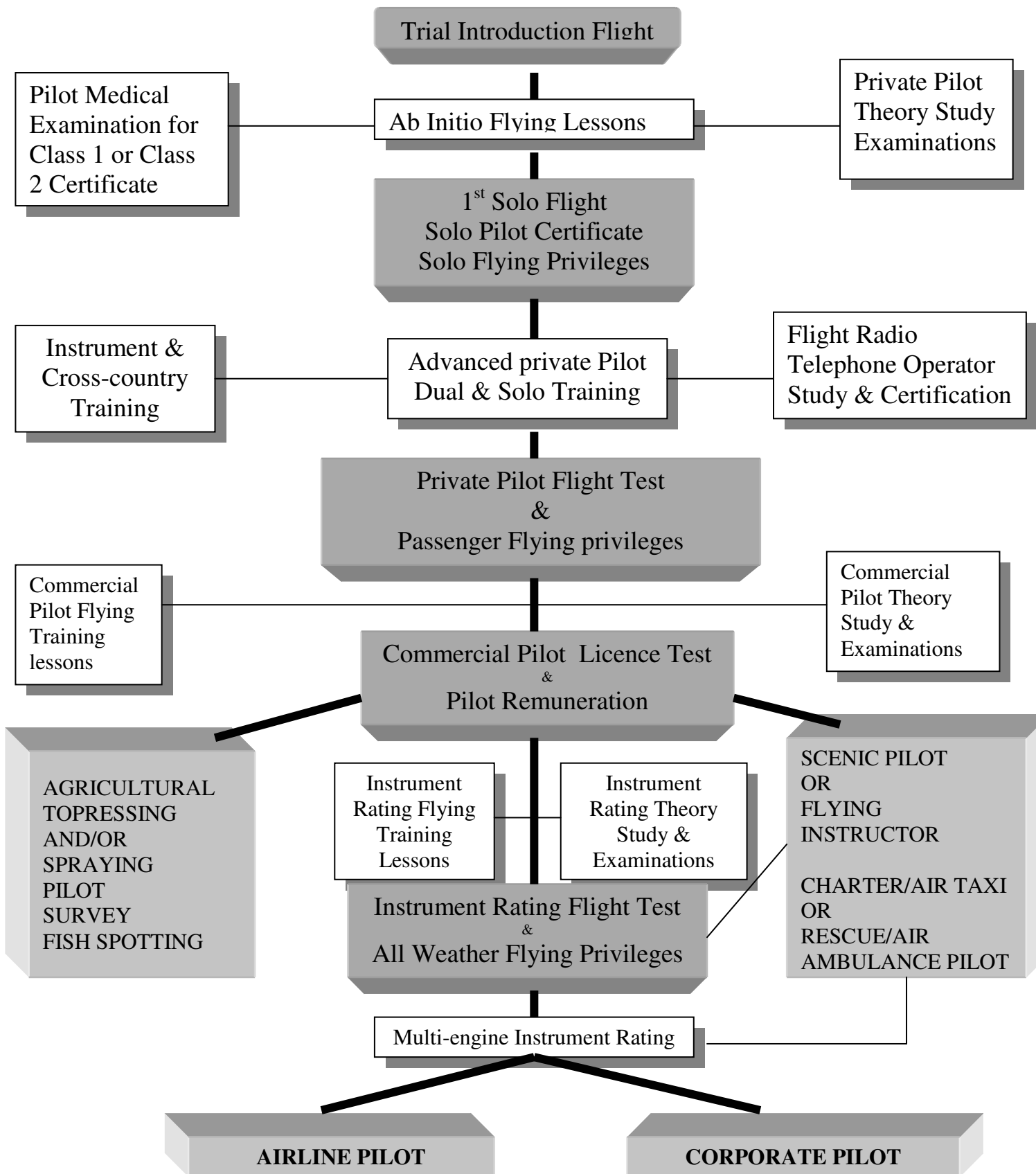
Please visit www.caa.govt.nz for eye specialists. There are a number available in Hawke's Bay.

Ear, Nose and Throat Specialist:

Mr N W Nicholson
325 Prospect Road
HASTINGS
Phone: 06 873-1162



FLOW CHART OF PILOT QUALIFICATIONS





AIR HAWKE'S BAY LTD

SAVINGS

SAVINGS

SAVINGS

In New Zealand, pilots training for a flying qualification are faced with a significant additional cost – **Aerodrome and Airways Fees**, especially, when they land at aerodromes that have Air Traffic Services in use. For example Ardmore, Auckland, Hamilton, Taupo, Napier, Palmerston North, Paraparaumu, Nelson, Christchurch, and many other aerodromes. Thus training from these aerodromes incur these costs for every full stop landing.

At Hastings Aerodrome there are no Aerodrome and Airways Fees for our Pilot Trainees.

Thus trainee pilots can make large savings on their career training costs by training at Hastings with **Air Hawke's Bay Ltd** where we own our own aerodrome and it is dedicated to our trainees basic and advanced training needs. You will still incur some Aerodrome and Airways Fees as you travel around New Zealand in the cross country part of your training, but the large savings will remain. For example, a Private Pilot trainee at Hastings can have total Aerodrome and Airways Fees as low as \$175.00.

An **additional cost saving** is achieved at Hastings through our simulator training. In the advanced pilot training areas, including Instrument Rating training, major costs benefits and improved quality training are received by our students through these training methods.

Polls of average Private Pilot training costs show that Private Pilot Trainees can save a minimum of \$800 to \$1,300 on their full course through training with Air Hawke's Bay Ltd.

Commercial Pilot Trainee surveys show pilot training cost savings of a further \$1,800 to \$2,200.

Instrument Rating Trainees can add even further savings, from using our Simulator and avoiding Aerodrome/Airways Fees, of \$1,800 to \$2,000.

Thus the total savings on our Integrated Professional Pilot Training Course at Air Hawke's Bay Ltd are around \$4,400 to \$5,500.

When the higher hourly charge out rates for training aircraft at main city training places are included the savings at Hastings increase dramatically. Some "Big City" prices can be as high as \$40 per hour more than our quality training hourly charges here in Hastings. Prospective pilot trainees need to be careful examining course costings to ensure they are fully aware of how Aerodrome and Airways Fees are going to be charged to Course participants.

NZ CIVIL AVIATION SYLLABUS

FOR PPL/CPL/SEIR/MEIR & C CAT INSTRUCTORS RATING

Please visit www.caa.govt.nz and select “Advisory Circulars”. Scroll down to “Rule 61” and then select the appropriate Advisory Circular, which provides the following information for all of the above licences/ratings:

- Experience requirements
- Currency requirements
- Syllabus for theory examinations
- Syllabus for practical flight tests





PAST STUDENTS

In the last three years we have had over 100 pilots graduate with national qualifications and supporting aviation licences. The following abbreviated list of a few of our graduates can be contacted for testimonials of their successful training with us.

Captain Jose Taio	Raratonga Airlines
Captain Ismail Al Rais	Gulf Air
Captain Cushla Heslop	Mount Cook
Captain Brett Rendle	Air New Zealand
Second Officer Steve Blackwood	Air New Zealand
Captain Warren Begley	Fiji
Captain William Turner	Easi Jet
Joe Cave	Ag pilot – Super Air
First Officer Darren Connelly	Cathay Pacific
First Officer Brad Jacques	Cathay Pacific
Captain Steve Algar	Air Nelson
Captain Craig Hayden	Mount Cook
Captain Sam Ritchie	Air Chathams
Pilot Ismail Didi	Air Taxis – The Maldives
Captain Joshua Briggs	Eagle Air
Captain William Harding	British Virgin Island Airlines
Second Officer Deepak Nalla	Air India
Second Officer Adarsh Ajaykumar	Air India
Second Officer Aashraya Lath	Air India
Second Officer Varun Kocchar	Air India
Second Officer Adarsh Ajaykumar	Air India
Gaurav Rao	Indian Coastguard
Second Officer Ishit Kumar	Air India
